

GHM9

INCREMENTAL ENCODERS, GHM9 RANGE



Features

- Especially designed for heavy duty: steel and paper mills, lumber, cranes, etc.
- Excellent resistance to shocks/vibrations and to extreme axial/radial loads
- Connection with terminal box with LED option, cable or connectors output
- Digital incremental output, optional analog output (tachocoders, optotacho)
- Mechanical over-speed switch: optional
- Max control option : detection of shocks, vibrations, temperatures...
- Solid shaft of 12 mm or 11 mm with RE0 115 mm flange (Euroflange B10) for tachogenerator type mounting

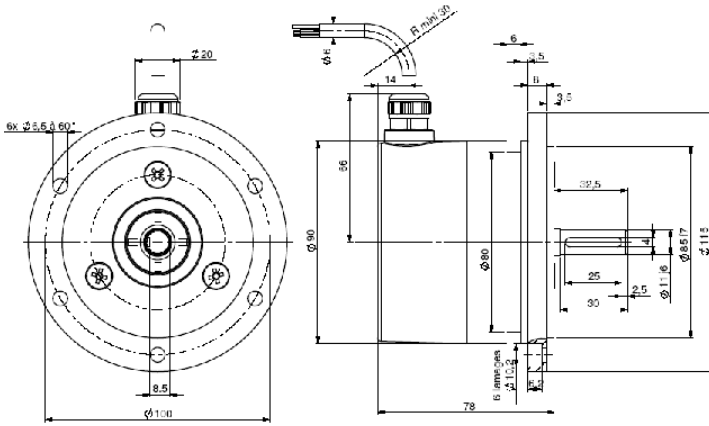
SPECIFICATIONS

| | |
|--|--|
| Material (connector or cable output version) Stainless steel option | Cover: zinc alloy Body: aluminium |
| Material (terminal box version) Stainless steel option | Cover: aluminium Body: aluminium |
| Shaft | Stainless steel |
| Bearings | 6001 serie |
| Maximum Loads | Axial: 100 N Radial: 200 N |
| Shaft Inertia Moment | $\leq 15 \cdot 10^{-6} \text{ kg.m}^2$ |
| Torque | $\leq 10 \cdot 10^{-3} \text{ kg.m}^2$ |
| Permissible max. Speed | 9 000 min ⁻¹ |
| Continuous max. speed | 6 000 min ⁻¹ |
| Shaft seal | Viton double lips |
| Shock (EN60068-2-27) | $\leq 2\,000 \text{ m.s}^{-2}$ (during 6ms) |
| Vibrations (EN60068-2-6) | $\leq 200 \text{ m.s}^{-2}$ (10 ... 1 000 Hz) |
| EMC | EN 50081-1, EN 61000-6-2 |
| Isolation | 1 000 V eff |

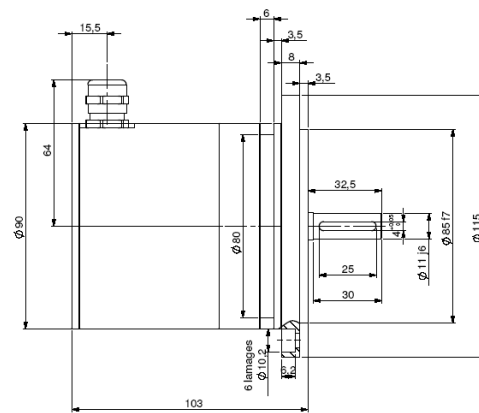
| | |
|--|---------------------------------------|
| Weight (connector or cable version) | 1,3kg alu cover, alu body |
| | 2,6kg alu cover, stainless steel body |
| | 2,8kg stainless steel cover and body |
| Weight (terminal box version) | 1,3kg alu cover, alu body |
| | 2,6kg alu cover, stainless steel body |
| | 2,8kg stainless steel cover and body |
| Operating temperature | - 20 ... + 80 °C (Encoder T°) |
| Storage temperature | - 40 ... + 80 °C |
| Protection(EN 60529) | IP 65 |
| Theoretical mechanical lifetime 10⁹ turns (F_{axial} / F_{radial}) | |
| 20 N / 30 N: 360 | 50 N / 100 N: 30 |
| | 100 N / 200 N: 2,5 |

DIMENSIONS

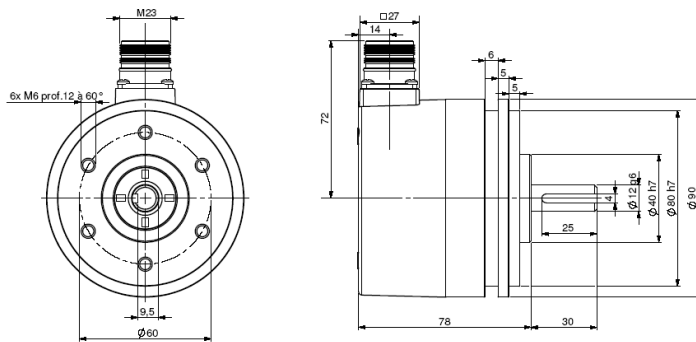
GHM9_11 connection G3R (radial cable gland)



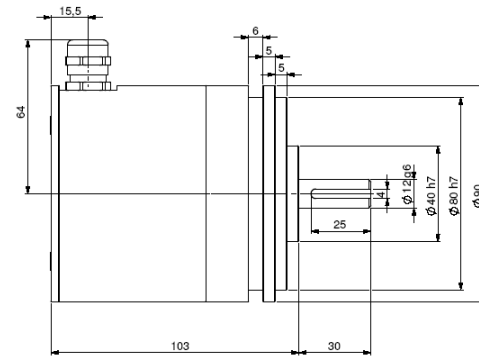
GHM9_11 connection GBR (terminal box)



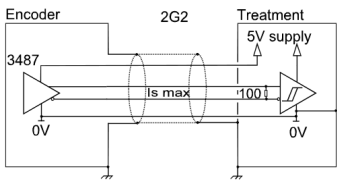
GHM9_12 connection G6R (radial M23)



GHM9_12 connection GBR (terminal box)

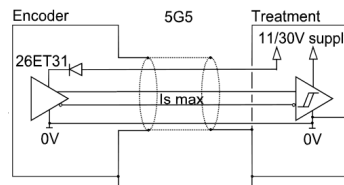


Output Electronic / Supply



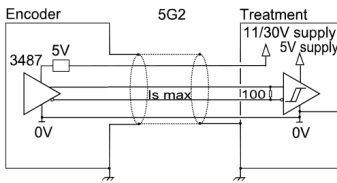
2G2 electronic (100kHz)

Supply : 5Vdc \pm 10%
 Cons. without load : 100mA max
 Current per channel : 40mA max
 0 max (Is=20mA) : $V_{ol} = 0,5Vdc$
 1 min (Is=20mA) : $V_{oh} = 2,5Vdc$



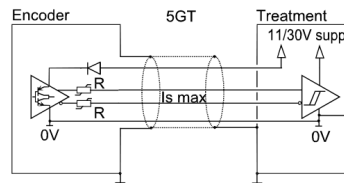
5G5 electronic (100kHz)

Supply : 11 to 30Vdc
 Cons. without load : 75mA max
 Current per channel : 40mA max
 0 max (Is=20mA) : $V_{ol} = 0,5Vdc$
 1 min (Is=20mA) : $V_{oh} = V_{cc}-3Vdc$



5G2 electronic (100kHz)

Supply : 11 to 30Vdc
 Cons. without load : 75mA max
 Current per channel : 40mA max
 0 max (Is=20mA) : $V_{ol} = 0,5Vdc$
 1 min (Is=20mA) : $V_{oh} = 2,5Vdc$



5GT electronic, optional (100kHz)

Supply : 11 to 30Vdc
 Cons. without load : 75mA max
 Current per channel : 40mA max
 0 max (Is=20mA) : $V_{ol} = 0,5Vdc$
 1 min (Is=20mA) : $V_{oh} = V_{cc}-2,5Vdc$

5GT electronic permits to drive very long (contact our factory)

Available in option:

- 3G3 electronic, supply between 15 and 30Vdc, push-pull output regulated 12Vdc
- 5GH electronic permits to drive different inputs (PLC + display for example)

Protection against short circuits for electronics: 5G5, 5GT, 3G3

Protection against polarity inversion for all electrics 2G2

"Option "Max control" : the encoder gives on real time its physical environment parameters: shocks and vibrations, too high or too low temperature, too low or too high supply, quality of the output signals : upon request.

Standard Connection

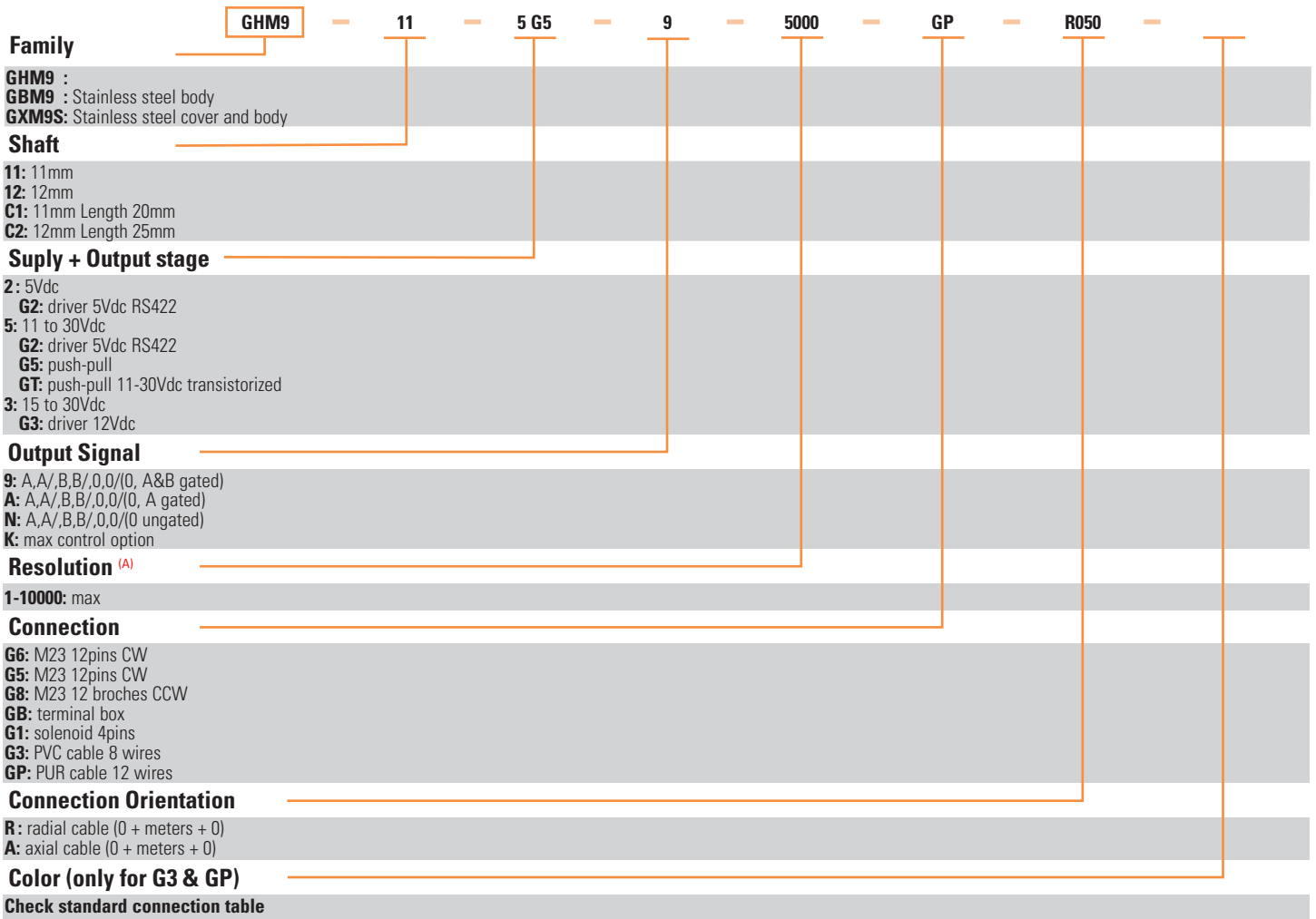
| | | - | + | A | B | 0 | A/ | B/ | 0/ | Ground |
|-----------|------------------------------------|--------------------------------|-------------------------------|----------|-----------|---------|---------|----------|----------|-------------------|
| GB | Terminal Box | 1 | 2 | 3 | 4 | 5 | 6 | 7 | 8 | On cable gland |
| G6 | 12 pins CW | 1 | 2 | 3 | 4 | 5 | 6 | 7 | 8 | Connector body |
| G8 | 12 pins CCW | 10 + 11 | 2+12 | 8 | 5 | 3 | 1 | 6 | 4 | Connector body |
| G3 | PVC cable 8 wires 8230/020 | WH white | BN brown | GN green | YE yellow | GY grey | PK pink | BU blue | RD red | General shielding |
| GP | PUR cable 12 wires 8230/050 | WH white + WH/GN white / green | BU blue + BN/GN brown / green | GY grey | BN brown | RD red | PK pink | GN green | BK black | General shielding |



ORDERING OPTIONS

Example : GHM9 11 - 5 G5 9 - 5000 - GP R050

Special versions upon request, for ex. over-speed switches, special flanges/ electronics/connections...





(A) **Available resolutions:** 1 2 3 4 5 6 7 8 9 10 12 13 14 15 16 19 20 21 24 25 26 28 29 30 32 35 36 39 40 43 45 46 48 50 54 56 58 60 62 63 64
66 67 70 72 74 75 76 80 84 86 88 89 90 91 94 96 100 107 110 120 122 123 125 127 128 130 132 135 138 140 147 150 157 159 160 168 169 170
172 175 180 188 191 196 200 201 205 220 222 225 234 240 241 242 245 246 248 250 254 255 256 258 259 267 268 275 283 285 295 300 305
314 315 318 320 330 340 350 360 367 375 378 380 381 388 390 397 400 405 410 424 425 438 443 450 471 480 489 495 500 505 512 515 534
540 550 565 580 600 623 625 628 630 632 635 650 660 700 720 746 750 752 754 800 810 840 860 880 891 900 942 990 1000 1024 1080 1100
1131 1200 1225 1250 1260 1280 1290 1400 1414 1440 1500 1536 1570 1600 1620 1630 1750 1800 1885 2000 2048 2250 2400 2500 2640 3000
3456 3600 3680 3750 4000 4096 4500 4900 5000 7200 9000 10000

Sensata Technologies, Inc. ("Sensata") data sheets are solely intended to assist designers ("Buyers") who are developing systems that incorporate Sensata products (also referred to herein as "components"). Buyer understands and agrees that Buyer remains responsible for using its independent analysis, evaluation and judgment in designing Buyer's systems and products. Sensata data sheets have been created using standard laboratory conditions and engineering practices. Sensata has not conducted any testing other than that specifically described in the published documentation for a particular data sheet. Sensata may make corrections, enhancements, improvements and other changes to its data sheets or components without notice.

Buyers are authorized to use Sensata data sheets with the Sensata component(s) identified in each particular data sheet. HOWEVER, NO OTHER LICENSE, EXPRESS OR IMPLIED, BY ESTOPPEL OR OTHERWISE TO ANY OTHER SENSATA INTELLECTUAL PROPERTY RIGHT, AND NO LICENSE TO ANY THIRD PARTY TECHNOLOGY OR INTELLECTUAL PROPERTY RIGHT, IS GRANTED HEREIN. SENSATA DATA SHEETS ARE PROVIDED "AS IS". SENSATA MAKES NO WARRANTIES OR REPRESENTATIONS WITH REGARD TO THE DATA SHEETS OR USE OF THE DATA SHEETS, EXPRESS, IMPLIED OR STATUTORY, INCLUDING ACCURACY OR COMPLETENESS. SENSATA DISCLAIMS ANY WARRANTY OF TITLE AND ANY IMPLIED WARRANTIES OF MERCHANTABILITY, FITNESS FOR A PARTICULAR PURPOSE, QUIET ENJOYMENT, QUIET POSSESSION, AND NON-INFRINGEMENT OF ANY THIRD PARTY INTELLECTUAL PROPERTY RIGHTS WITH REGARD TO SENSATA DATA SHEETS OR USE THEREOF.

All products are sold subject to Sensata's terms and conditions of sale supplied at www.sensata.com SENSATA ASSUMES NO LIABILITY FOR APPLICATIONS ASSISTANCE OR THE DESIGN OF BUYERS' PRODUCTS. BUYER ACKNOWLEDGES AND AGREES THAT IT IS SOLELY RESPONSIBLE FOR COMPLIANCE WITH ALL LEGAL, REGULATORY AND SAFETY-RELATED REQUIREMENTS CONCERNING ITS PRODUCTS, AND ANY USE OF SENSATA COMPONENTS IN ITS APPLICATIONS, NOTWITHSTANDING ANY APPLICATIONS-RELATED INFORMATION OR SUPPORT THAT MAY BE PROVIDED BY SENSATA.

Mailing Address: Sensata Technologies, Inc., 529 Pleasant Street, Attleboro, MA 02703, USA.

CONTACT US

Americas

+1 (800) 350 2727
sensors@sensata.com

Europe, Middle East & Africa

+33 (3) 88 20 8080
position-info.eu@sensata.com

Asia Pacific

sales.isasia@list.sensata.com
China +86 (21) 2306 1500
Japan +81 (45) 277 7117
Korea +82 (31) 601 2004
India +91 (80) 67920890
Rest of Asia +886 (2) 27602006
ext 2808